



Airport Master Plan Update

Public Information Workshop
June 23, 2021

Agenda

- Introductions
- Airport Overview
- Master Planning Process
- Aeronautical Forecast
- Areas of Focus
- Next steps
- Q and A



Overview of Airport Facility



Google Earth

Airport Facts

Airport Elevation	841.1' Above Sea Level	
Airport Property	985 Acres	
From Atlanta (downtown)	6 Miles West	
Air Traffic Control	Yes	
Airport Use	Open to the Public	
International Airport	Customs Landing Rights Airport	
Runway Characteristics	Primary Runway (8/26)	Crosswind (14/32)
Runway Dimensions	5,797' x 100'	4,158' x 100'
Runway Approach Type	ILS and GPS	Visual Approaches
Runway Lighting	High Intensity	Medium Intensity

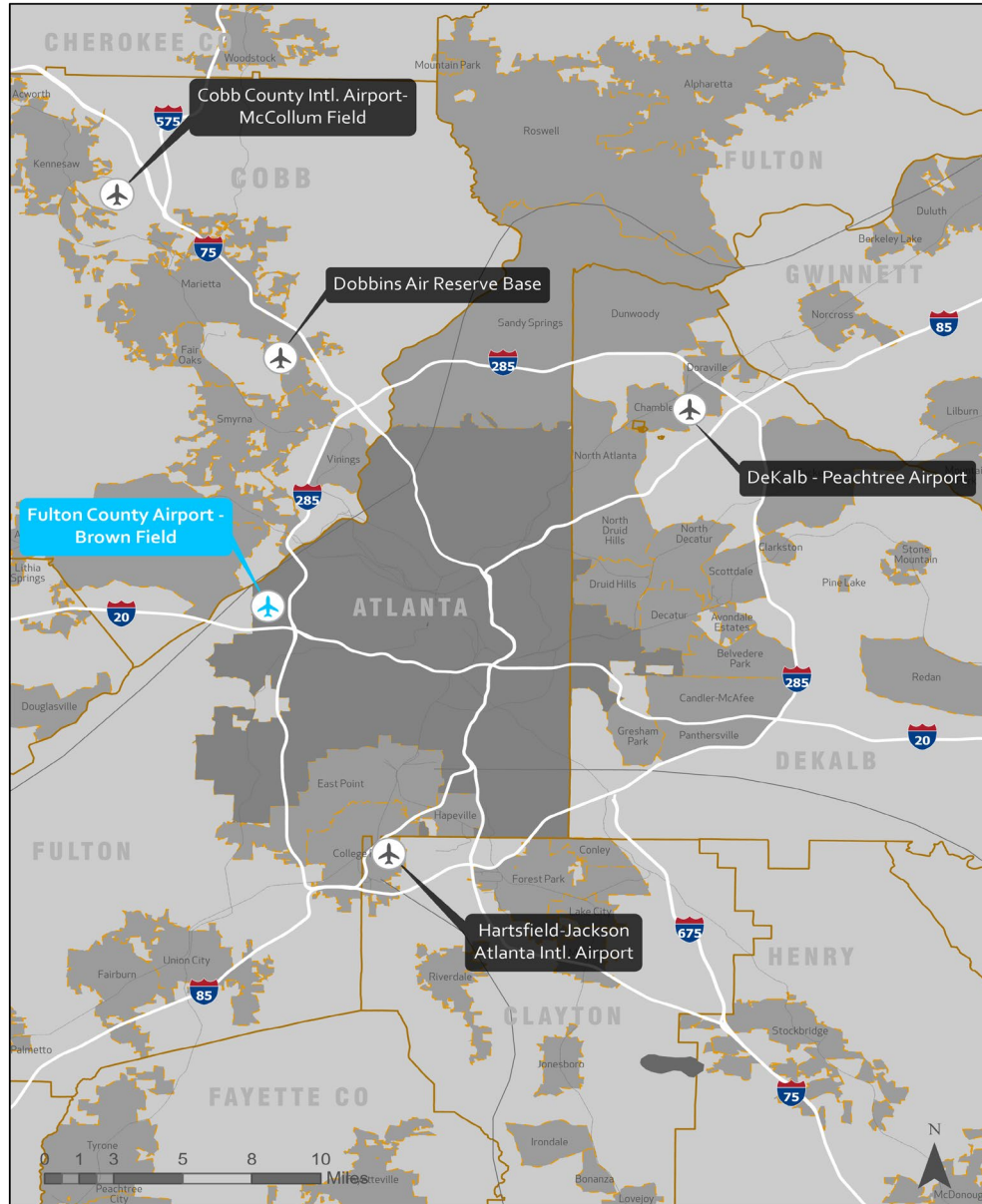
Airport Background and Role

- Constructed in 1949
- General-Aviation Airport
- Reliever Status
- 1,230 Total Jobs Supported
- \$75.2m total annual payroll
- \$198.6m total annual economic output



Major Flight Departments/FBOs/Tenants

ACE Flight School	Holder Construction
Arthur Blank	Home Depot
Cox Media	KOCH
Coca-Cola	Signature Flight Support
Enterprise Aviation	U.S. Marshals
Hill Aircraft	Norfolk Southern
Georgia Aviation Authority	





Current Based Aircraft

Aircraft Type	2021 Based Aircraft
Single-Engine	39
Multi-Engine	6
Jet	46
Helicopter	6
Total	97

Source: National Based Aircraft Inventory Program, www.basedaircraft.com, Accessed 3/25/21.

Source: FAA TAF FTY, 2010-2020, Issued January 2021.

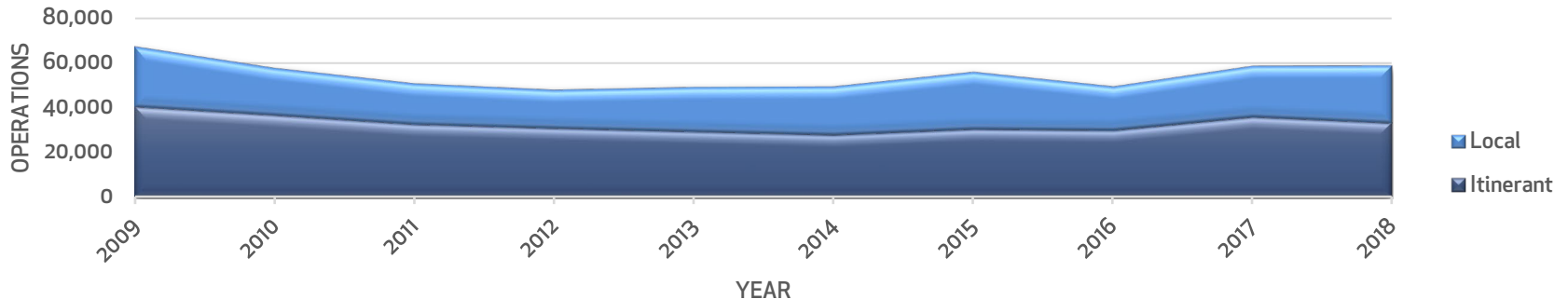
Note:

- 1) The current TAF does not reflect a recent based aircraft inventory that reports 97 based aircraft as of March 2021.

Historical Operations

Year	Itinerant						Local				Total Operations
	Air Carrier	Air Taxi	GA	Military	Total	% of Total	Civil	Military	Total	% of Total	
2009	3	6,040	37,732	705	44,480	58.27%	31,663	196	31,859	41.73%	76,339
2010	4	4,452	35,443	524	40,423	60.17%	26,729	30	26,759	39.83%	67,182
2011	2	4,298	32,059	341	36,700	63.57%	20,981	50	21,031	36.43%	57,731
2012	0	3,518	29,020	125	32,663	64.16%	18,181	68	18,249	35.84%	50,912
2013	0	4,039	26,852	83	30,974	64.41%	17,076	40	17,116	35.59%	48,090
2014	0	3,345	25,898	187	29,430	59.72%	19,792	58	19,850	40.28%	49,280
2015	0	2,925	24,865	128	27,918	56.35%	21,598	28	21,626	43.65%	49,544
2016	0	2,558	27,857	102	30,517	54.53%	25,438	8	25,446	45.47%	55,963
2017	0	2,616	27,306	109	30,031	60.57%	19,515	36	19,551	39.43%	49,582
2018	0	5,071	30,757	19	35,847	61.09%	22,823	10	22,833	38.91%	58,680
2019	0	3,695	29,415	41	33,151	56.44%	25,582	0	25,582	43.56%	58,733
AAGR	AAGR	AAGR	AAGR	AAGR	AAGR	AAGR	AAGR	AAGR	AAGR	AAGR	AAGR
2009-2019	-100.00%	-4.80%	-2.46%	-24.76%	-2.90%	-0.32%	-2.11%	-100.00%	-2.17%	0.43%	-2.59%
2014-2019	N/A	2.01%	2.58%	-26.18%	2.41%	-1.12%	5.27%	-100.00%	5.20%	1.58%	3.57%

Source: FAA OPSNET database and Michael Baker International, 2020.

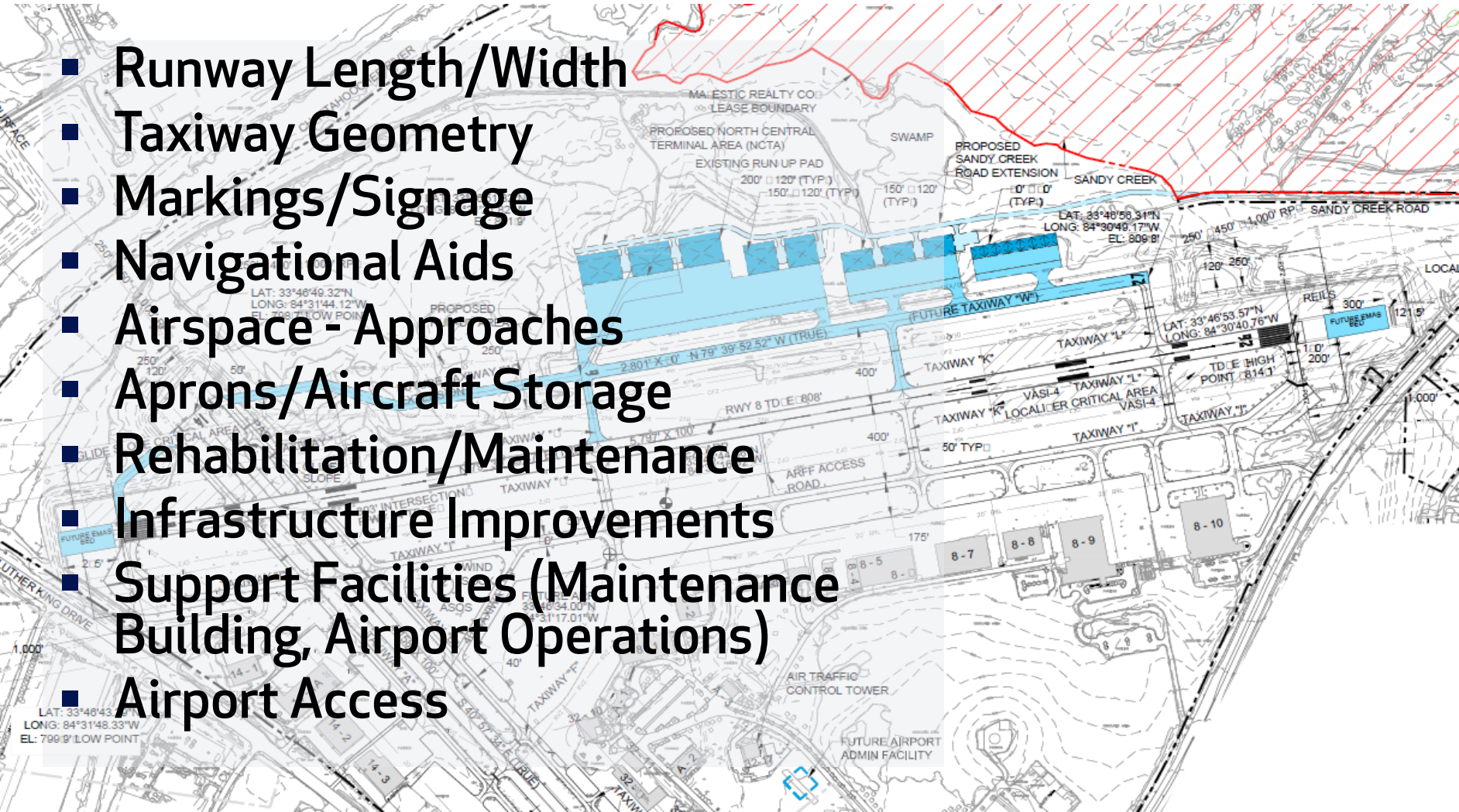


What is a Master Plan?

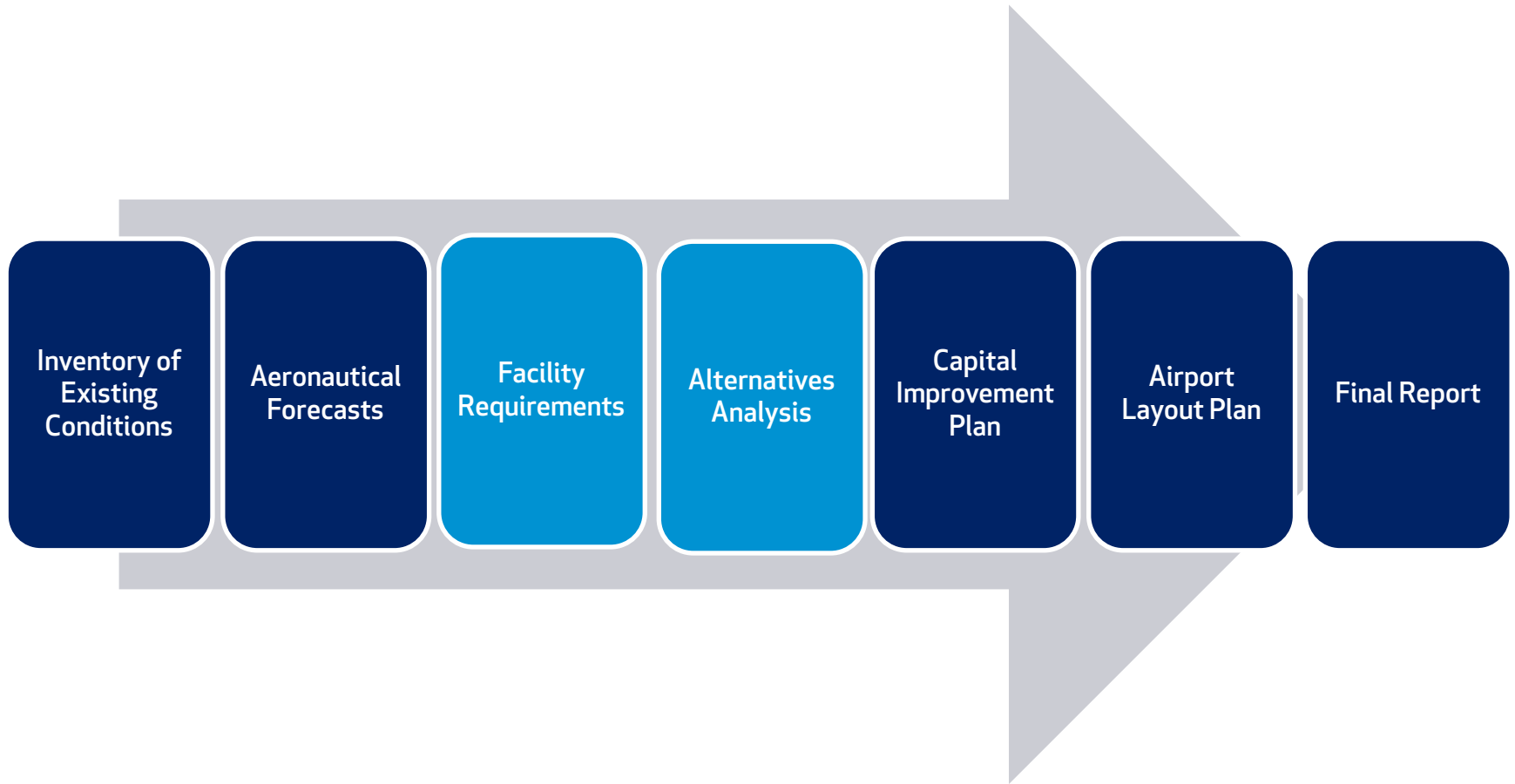
- Projection of the airport's growth over a 20-year timeframe
- Plan for the ultimate development of physical facilities
- Development guide, including timing and costs, that considers adjacent land uses and environmental issues
- Step-by-step description of the logic used in formulating the plan
- Display of the plan in graphical and written form
- Positions the airport to compete for FAA funding

Common Master Plan Considerations

- Runway Length/Width
- Taxiway Geometry
- Markings/Signage
- Navigational Aids
- Airspace - Approaches
- Aprons/Aircraft Storage
- Rehabilitation/Maintenance
- Infrastructure Improvements
- Support Facilities (Maintenance Building, Airport Operations)
- Airport Access



Master Plan Steps

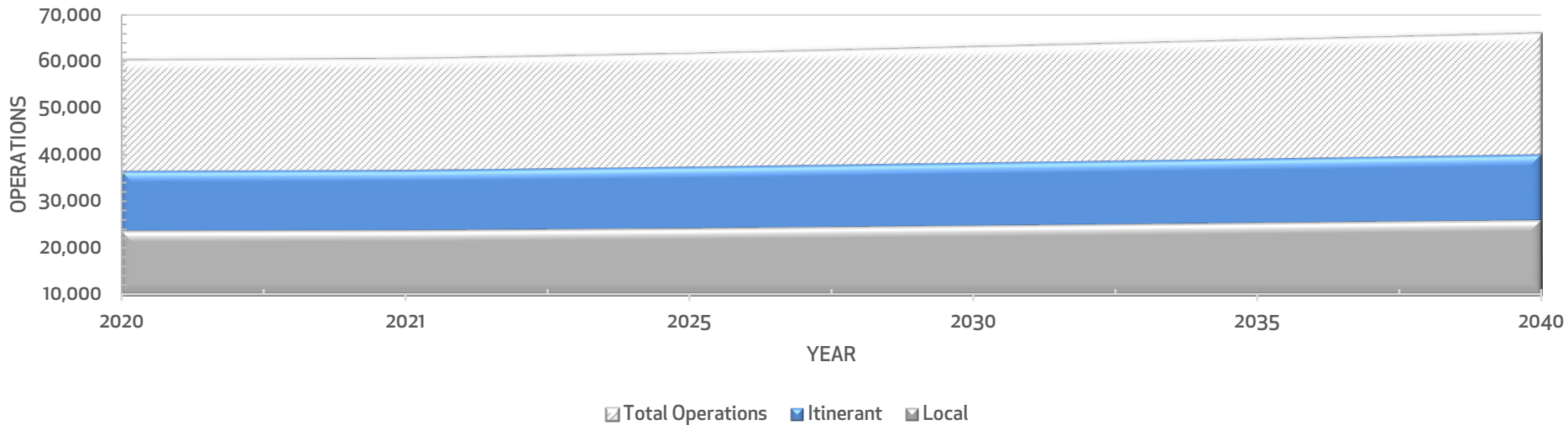


Forecast of Operations

Preferred Operations Forecast

Year	Itinerant					Local			Total Operations
	Air Carrier	Air Taxi	GA	Military	Total	Civil	Military	Total	
2020*	0	5,475	31,011	40	36,526	23,630	0	23,630	60,156
2021	0	5,500	31,154	40	36,694	23,739	0	23,739	60,433
2025	0	5,602	31,731	40	37,373	24,179	0	24,179	61,551
2030	0	5,732	32,467	40	38,240	24,740	0	24,740	62,979
2035	0	5,865	33,221	40	39,126	25,314	0	25,314	64,440
2040	0	6,001	33,992	40	40,034	25,902	0	25,902	65,935
AAGR 2020-2040	0.00%	0.46%	0.46%	0.00%	0.46%	0.46%	0.00%	0.46%	0.46%

Source: FAA Aerospace Forecast, 2020.

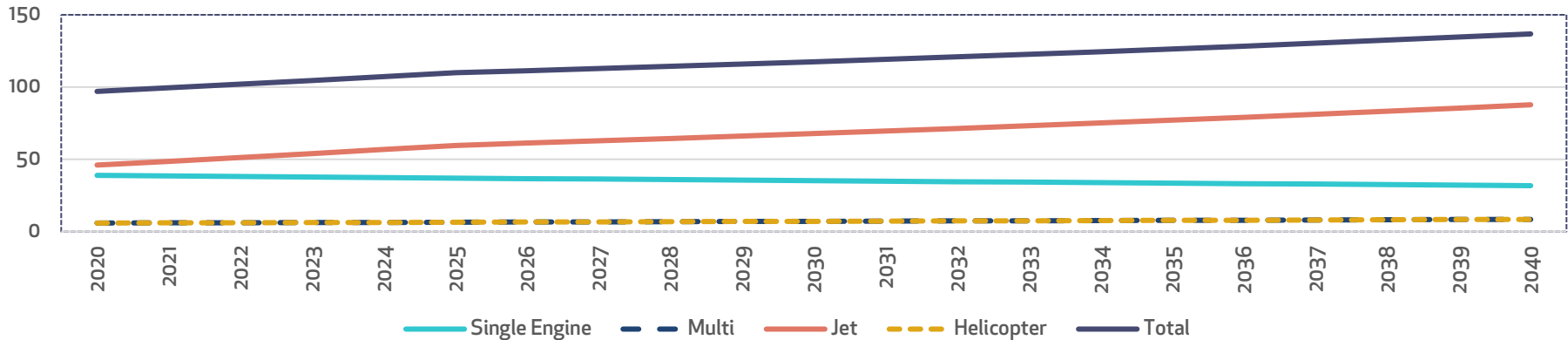


Based Aircraft Forecast (2020-2040)

Year	Single Engine	Multi-Engine	Jet	Heli	Total
2020	39	6	46	6	97
2021	39	6	49	6	99
2025	37	7	60	7	110
2030	35	7	68	7	117
2035	34	8	77	8	126
2040	32	9	88	9	137
AAGR 2020-2025	-1.00%	1.80%	5.34%	1.80%	2.53%
AAGR 2025-2030	-1.00%	1.80%	2.60%	1.80%	1.34%
AAGR 2030-2040	-1.00%	1.80%	2.60%	1.80%	1.53%
AAGR 2020-2040	-1.00%	1.80%	3.28%	1.80%	1.73%

Source: Michael Baker International, 2021.

Based Aircraft Forecast (2020-2040)



Covid Effects Past and Future

Takeoffs and Landings at Fulton County Executive Airport - Charlie Brown Field							
Year	June	July	August	September	October	November	Total
2019	5,263	4,774	6,273	5,459	5,086	4,951	31,806
2020	4,934	5,443	5,215	5,254	5,377	5,150	31,373
Percent Change	-6%	14%	-17%	-4%	6%	4%	-1%

Source: FAA OPSNET,

- **Operations (Takeoffs and Landings) at FTY rebounded to 2019 levels**
- **Many general activities were little affected by COVID (i.e. flight training, aerial surveying, firefighting, pipeline patrol)**
- **General aviation offers advantages for corporate travel**

Critical Aircraft

- An important step of a master plan is determining the most demanding aircraft with at least 500 takeoffs and landings. This influences design requirements such as:
 - Runway Length/Width
 - Pavement Strength
 - Safety Areas
 - Airfield Geometry



FTY's Existing and Future Critical Aircraft

Item	Current/Future
Critical Aircraft	Gulfstream G650
Aircraft Type	Twin-engine business jet
Aircraft Approach Category (AAC)	D
Airplane Design Group (ADG)	III
Taxiway Design Group (TDG)	2
Wingspan	99.7'
Tail Height	25.8'
Length	99.9'
Cockpit to Main Gear (CMG) Distance	45'
Wheelbase	45'
Main Gear Width (MGW) Outer to Outer	16'
Approach Speed (V_{REF})	145 Knots
Max Takeoff Weight (MTOW)	99,600 lbs.



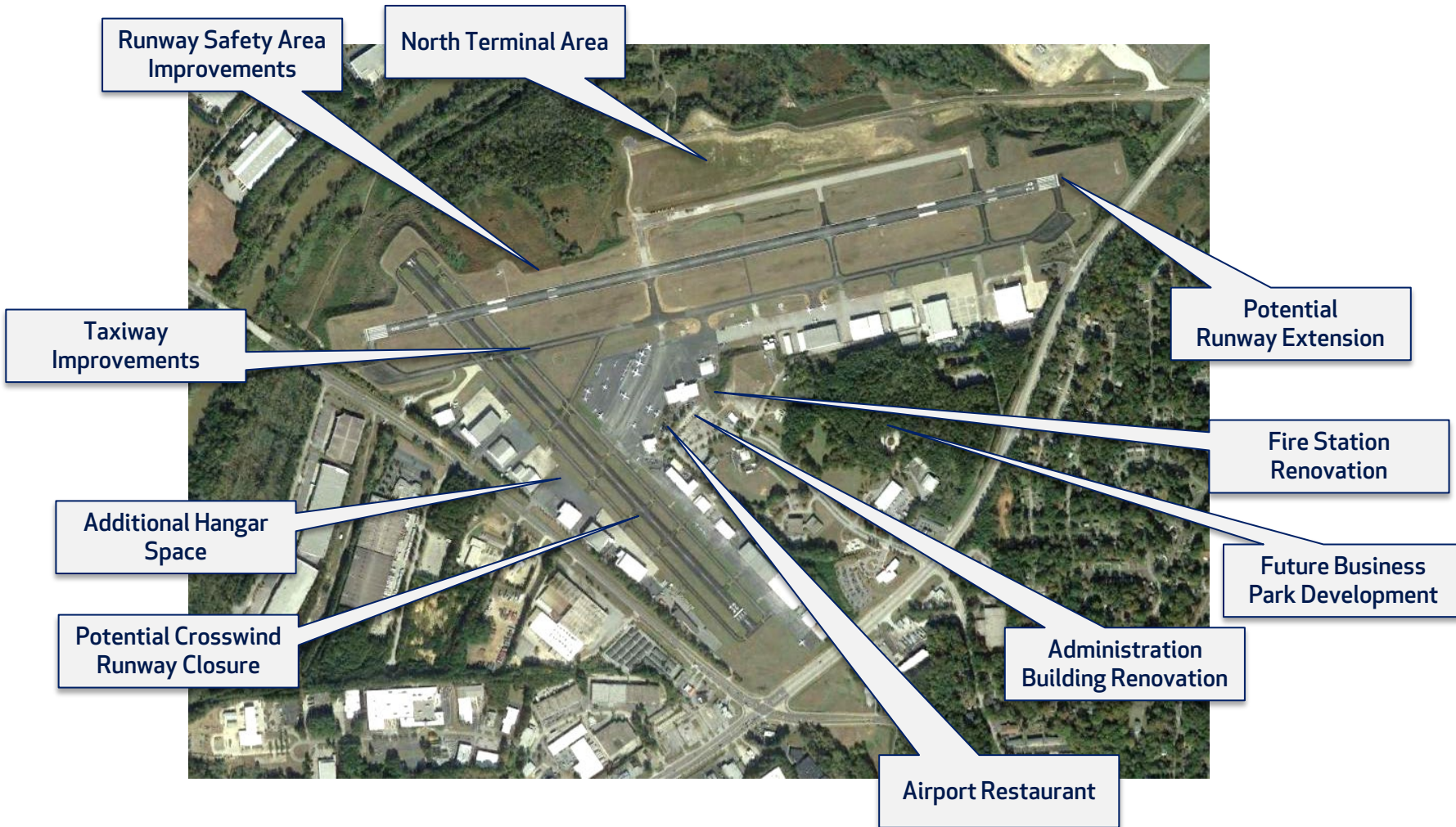
Sources: FAA Aircraft Chart Database, www.AC150gulfstream.com, and Michael Baker International, Inc., 2019. Photo:

Known Areas of Focus at FTY

- Runway Safety Area Improvements
- Runway Length Improvements
- Obstruction Removal/Lower Minimums
- Improved NAVAIDs and Approaches
- Taxiway Geometry/Signage
- Crosswind Runway Lifespan
- Additional Storage and Landside Improvements
- Connect with CID/County Planning
- Business Park



Potential Improvements



Master Plan Deliverables and Approvals

Documents:

- Aeronautical Forecast (approved April 2021)
- Draft/Final Technical Report (late 2021)
- Airport Layout Plan Drawing Set (late 2021)

Approvals:

- Final Plan Submitted to BOC (early 2022)
- GDOT/FAA Review and Concurrence (early 2022)

Public Participation

- **Technical Advisory Committee**
 - Airport Businesses and Tenants
 - Review meetings at key milestones
- **Virtual Public Workshops**
- **Fulton Board of Commission Briefing**



Next Steps



- **Aeronautical Forecast is complete**
- **Evaluation of Improvements**
- **TAC Meeting in August**
- **Final Public Workshop (late 2021)**
- **Final Plan ready for BOC review by end of year.**

Where to find information online

- Find a copy of this presentation and recording of this meeting at:
<https://www.fultoncountyga.gov/business-services/airport>
- Tim Beggerly, Airport Manager
 - Timothy.Beggerly@fultoncountyga.gov
 - Phone: 404-613-4203
- Final Workshop date/time will be announced through County Communications two weeks ahead of time

Questions/Discussion

