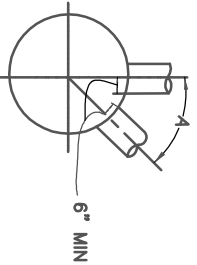
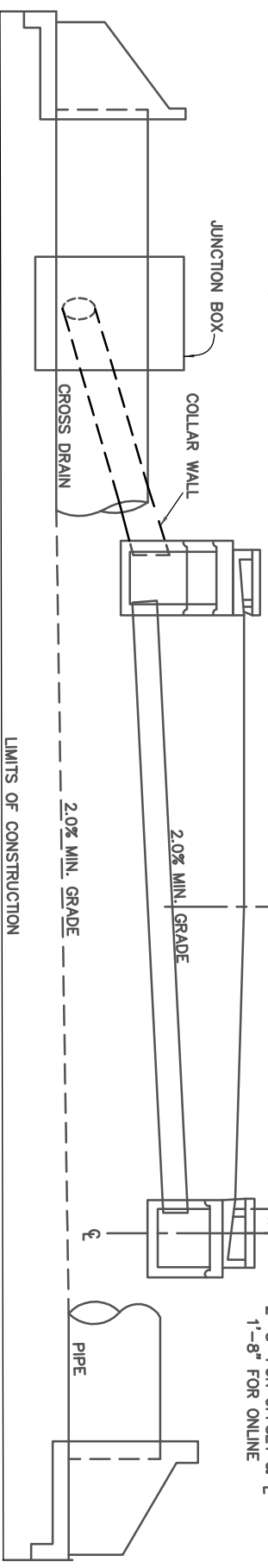


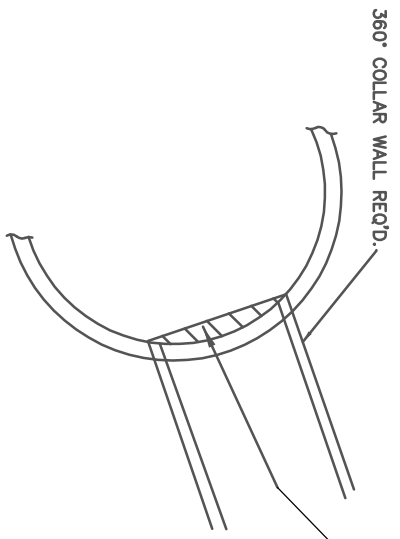
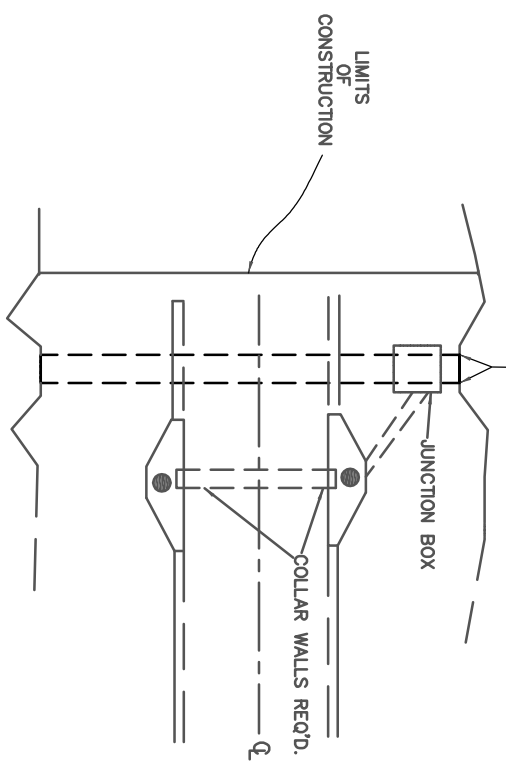
MIN ANGLE BETWEEN PIPES	ANGLE	CLOCK METHOD
18"	75°	2:00
24"	75°	2:30



THE ABOVE TABLE IS BASED ON TWO PIPES OF EQUAL SIZE. WHEN ORDERING STATE ANGLE BY CLOCK METHOD. REQUEST ONE PIPE AT 12 O'CLOCK AND THE OTHER SIZE AND TIME AT WHATEVER ON THE JOB CONDITIONS REQUIRE.



LOCATION OF CATCH BASIN BOX FROM STREET			
STREET WIDTH (BK. TO BK.)	ONLINE "D"	OFFSET "D"	FROM BACK OF CURB TO C 2'-8" FOR OFFSET & L 1'-8" FOR ONLINE
24'	13'-8"	14'-8"	
29'	16'-2"	17'-2"	
39'	21'-2"	22'-2"	
44'	23'-8"	24'-8"	
52'	27'-8"	28'-8"	



PIPE SHALL BE OF SUFFICIENT LENGTH FOR OUTSIDE DIAMETER TO REACH INTERIOR WALLS OF BOTH CATCH BASINS. UPON INSTALLATION, EXCESS PIPE SHALL BE REMOVED FLUSH TO INTERIOR WALL OF CATCH BASIN.

SEE STATE STANDARD NO. 1033 D, E, F, OR 1034 D & E FOR PRECAST SQUARE CATCH BASIN

FULTON COUNTY STANDARD DETAIL 508
LOCATION OF ROUND CATCH BASIN

DATE	REVISIONS	DATE	REVISIONS	DOS./DRN./CHK'D. CMS	APPROVED:	DATE:	FULTON COUNTY	FULTON COUNTY PUBLIC WORKS	DRAWING NO.
8/08	RC				REW	12-2-05		141 PRYOR ST. ATLANTA, GA. 30303	508
								404-612-7400 FAX: 404-224-0498	